

DISTRIBUTOR



Business

EFCON[®] water
EFFLUENT CONTROL SYSTEMS




Flow
Level
Pumps
Analytic
Samplers

Distributor for Australia & Sole Distributor New Zealand

 Abwasser Probenahme

 Wastewater Samplers

 Preleveurs

 Afvalwater monstername

**EFCON[®] Patented
Robust Dual Wall
Thermoplastic Enclosure**
Ambient of -25°C up to +40°C

Main Switch

Superior Refrigeration Unit

- Airflow Condenser section
- Coating on Cooler section
- Airflow SS316 Evaporator
- 2°-5°C acc. EN 16479, EN ISO 5667-3 and NEN 6600-1
- R134A

Insulation

PUR 40 – 60 mm foamed

Dimensions

± 600 x 600 x 1100 mm

Empty Weight

± 55 Kg



LCD Display Jazz Controller

- Time & Flow prop.sampling
- Event Trigger prop.sampling
- Pulse divider
- Start / Stop time
- Distributor turn time / day
- Overfill protection software
- Sampling protocol
- Alarm Output (option 2)
- Input Pulse & Current
- ECO Cooler
- MODBUS/PROFIBUS

Process window PC

5 selectable sampling principles

According EN 16479, EN ISO 5667 and NEN 6600-1

Pull In & PADLOCK Door

1-2-4-8-12-24 containers

Efcon[®]omy Sampling Systems

Acc. EN 16479, EN ISO 5667-2&3&10 and NEN 6600-1

Efcon[®]omy products are found on standard WWTP applications. Independant functioning or as a slave to a master PLC.

Efcon[®]omy samplers are standard equipped with a UNITRONICS Jazz or UNITRONICS Vision 130 controller. The Jazz features all standard applications and can be prepared for BUS systems. The Vision is used for customised applications and can be adjusted for Ethernet, data Logging, Open Channel Flowmeter, Pumpcontrol etc..

Warranty period when installed according to the installation manual

- Thermoplastic Enclosure: 4 year
- 24 months / not including wear- and tear parts
- Delivery time: Normal Stock Item, please contact your dealer.



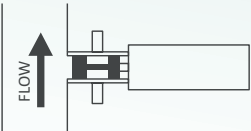
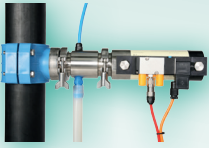
Waste Water Samplers - Applications

Efcon Waste Water Samplers is ideal for use in -

Municipal & Industrial Water and Wastewater Treatment, Food, Mineral and Chemical Processing, Power Plants, Petrochemical, Pharmaceutical & Manufacturing Industries, Pulp and Paper Industry, Sewers, Tanks, Open Channels, Sumps, Reservoirs, Lakes and Rivers (Watersheds).

5 Sampling Principles to select:

EN ISO 5667, NEN 6600-1



ILS Guillotine Sample

- Heavy Duty In Line Sampler from closed pipes
- Raw waste water & sludge sampling

Advantages

- 6-10 Bar Actuator
- Simplicity of the system
- Stainless Steel house and cylinder
- For Raw Wastewater
- No sensors in medium
- Up to 2.5 Bar (standard) or 5 Bar medium pressure
- Optional SLUDGE model

EN 16479, EN ISO 5667, NEN 6600-1,



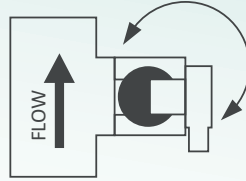
Vacuum Sampler

- Suction sampler from open channels or wires
- 21x16 mm tubing
- Preferred for WWTP above peristaltic principle

Advantages

- 24 VDC Actuators
- Above the ground mounting
- Most common use Principle
- Self protecting against solids
- Options to higher suction levels

EN ISO 5667, NEN 6600-1



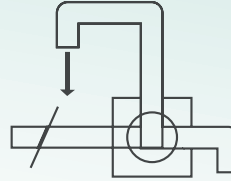
ILS2W Sampler

- In Line Sampler from closed pipes
- Up to 4 bar medium pressure
- No raw waste water

Advantages

- 24 VDC or 6 bar Actuator
- Simplicity of the system
- Several materials to select (SS316/PVC/PP)
- No sensors in medium
- Selectable pressure class
- Low maintenance interval
- Simple unit

EN ISO 5667, NEN 6600-1



ILS3W Sampler

- In Line Flush through Sampler from closed pipes
- Up to 16 Bar medium pressure
- No raw parts

Advantages

- 24 VDC or 6 Bar Actuator
- Simplicity of the system
- Several materials to select (SS316/PVC/PP)
- No sensors in medium
- Selectable pressure class
- Low maintenance interval
- Flush Water

EN 16479 and EN ISO 5667



Peristaltic Sample

- Suction Sampler from open channels or wires
- 12x9 mm Tubing Sampler
- Not recommended for billing purposes

Advantages

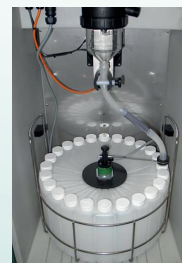
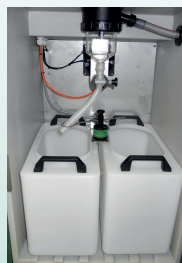
- 24 VDC Actuator
- Above the ground mounting
- Well known Principle
- Commonly used for portable equipment
- Simple Principle
- 1 moving Pump
- Low cost

Efcon[®]omy Systembox

Option: Efcon[®]omy wastewater samplers with extra Systembox enclosure. An 'All Weather Systembox' you can mount Tracing, Flowmeters, Analytics, etc.

Direct distribution system

- 1 Container 1 to 60 Ltr / 2 x 25 Ltr / 4 x 12,5 Ltr / 8x 6 Ltr / 12 x 2 Ltr / 24 x 1 Ltr
- Auto Drain & Auto Clean 2 x 10 L
- Material containers: PE (optional glass)



Suite 77/278 Church Street
RICHMOND VICTORIA 3121
Ph 0421 474 658

Email sales@ieands.com.au
Website www.ieands.com.au

Fully automati
Auto Drain & Auto Clean
3 x 17 Ltr