

24-CHANNEL SEISMOGRAPH - 24 BIT PASI MOD. GEA 24

GEOPHYSICS

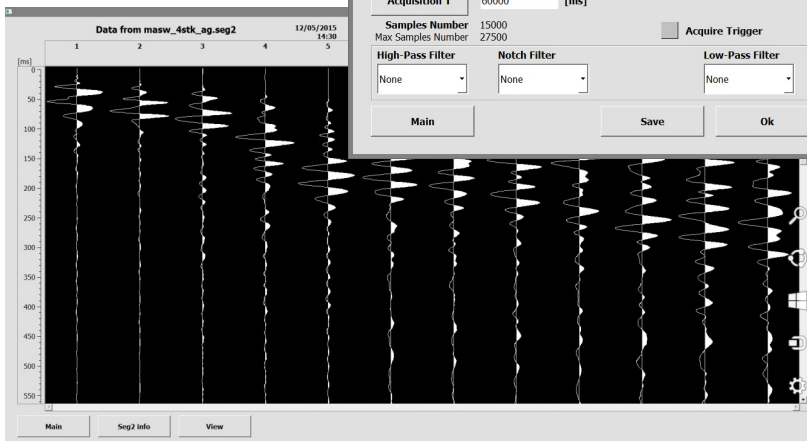
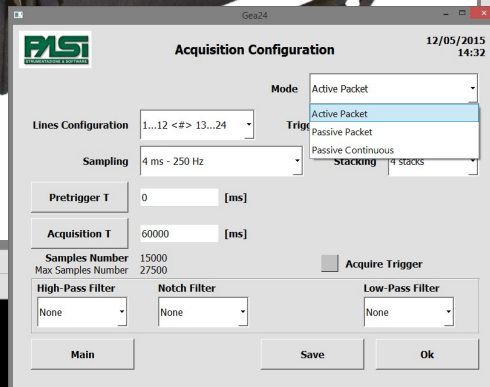
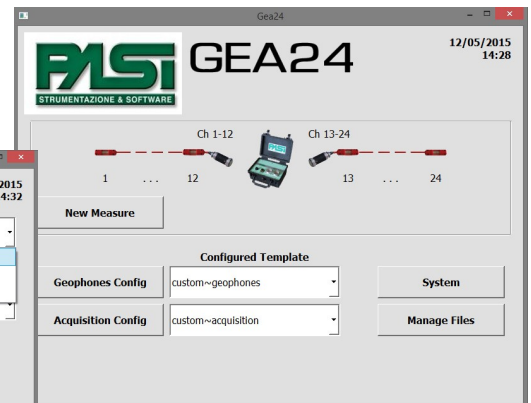
**Easy to use
Compact-size
Mini Price!!!**



GEA24 is a compact-sized **24-channel seismograph** (2 units can be serialized for a total of 48 chs) with a **24 bit acquisition board** and **USB interface for external PC** (not included). Suitable for so many applications, GEA-24 is a really affordable solution for all professional uses.

Applications:

- REFRACTION
- SHALLOW REFLECTION
- SURFACE WAVES (MASW, Re.Mi., Vs30, MAAM, ESAC, etc.)
- HVSR / VIBRATIONS
- DOWNHOLE (with borehole 3D-geophones **Mod.GFA** or **DHTG**)
- CROSSHOLE applications (with borehole 3D geophones **Mod.GFA** or **DHTG** + **P/S wave borehole seismic source Mod.CHE**)



5 years warranty

Gea24 connected with tablet PC



24-CHANNELS SEISMOGRAPH - 24 BITS

PASI MOD. GEA 24

GEOPHYSICS

TECHNICAL SPECIFICATIONS GEA 24

Number of channels	24 chs + trigger (AUX ch) - 2 units can be serialized for a total of 48 chs
Data Conversion	24 real bits Sigma-Delta ADC (compatible with analog geophones of any resonance frequency)
Sampling intervals	Active Acquisitions: - up to 125 microsec (8000sps) on 24 chs, - up to 31.25 microsec (32000sps) on 6 chs Passive Acquisitions: - up to 4000 microsec (250sps) on 24 ch - up to 500 microsec (2000sps) on 3 chs
Acquisition length	27500 samples @ 24 chs (+aux) 174500 samples @ 3 chs (+aux) Unlimited samples for continuous acquisitions
Preamp. gain	0/52 dB, software selectable
Stacking	Unlimited number of stackings
Input impedance	2M Ω // 22nF
S/N ratio	117db @1ksps
Distortion	0.007% @16kHz
Bandwidth -3dB Bandwidth +/- 0.1dB	6.8kHz@32ksps - 0.21 kHz@1ksps 3.5 kHz@32ksps - 0.11 kHz@1ksps
Filters	Low Pass:125-200-500-1000Hz High Pass: 10-20-30-40-50-70-100-150-200-300-400Hz
Notch Filter	50-60Hz + harmonics
Trigger	Normally closed contact, normally open contact (e.g. with explosive), analog signal (starter geophone, hammer switch), TTL triggering. Trigger sensibility adjustable via software
Trace Display	Wiggle-trace / variable area
Noise-monitor	All channels + trigger; real time bar display
AUX channel	1x (for trigger or any other input signal)
External interface	1x USB 2.0 to external PC (not included)
Data format	SEG2, SAF (other formats available on request)
Power supply	5VDC from USB, 0.25A
Operating/Storage Temp.	-30°C to +80°C
Humidity	80% relative humidity, non condensing
Dimension	24cm x19.5cm x11cm
Weight	2 Kg

Available accessories:

- Seismic Cables
- Horizontal and Vertical Geophones
- 3D Land geophones
- Striking plate for "P and/or "S" waves
- Seismic Energizer "ISOTTA"
- 3D Borehole geophones
- Crosshole energizer
- Hammer Switch / Starter Geophone
- GPS option (georeferencing & timing)
- Radiotrigger

Specifications subject to change without notice