

## EXPLORATION SEISMOGRAPHS PASI MOD. 16S-U & 16S-P

GEOPHYSICS



SEISMOGRAPH MOD: 16S-P



SEISMOGRAPH MOD: 16S-U

A compact version of the well-proven Serie 16S seismograph, these new instruments are now available in **16S-U version** (with USB interface for an external PC provided by the User) and in **16S-P version** (with integrated PC).

**Lighter**

**Smaller**

**Another step forward.**

### Applications:

- trend of soil stratigraphy in small and medium depth
- determination of the depth and evolution of the bedrock
- Vs30 profile determination according to the new seismic (MASW, microtremors, downhole, etc. ..)
- Detailed analysis of landslides for the reconstruction of the surface of loosening
- studies of foundations
- Preliminary investigations to large works (railways, roads, tunnels, pipelines)
- valutazone of the costs of the excavation
- evaluation of the deposits of gravel, sand and clay materials
- mining surveys

PASI

**TECHNICAL FEATURES OF 16S-U and 16S-P**

Model	16S12-U	16S24-U	16S12-P	16S24-P
Codice	SIS-401-000	SIS-402-000	SIS-301-000	SIS-302-000
Integrated PC	No	No	Yes	Yes
Number of channels	12	24	12	24
With 2nd unit connected in series	Up to 48 channels			
Acquisition board	National Instruments®			
Processor	--	--	Via Eden 500MHz or better	
Resolution	24 bit with propriotor algorithm			
Operating system	--	--	Windows-XP® Embedded and 32 bit data acquisition software	
Display	--	--	Touch Screen	
Memory	--	--	Solid state memory	
Sampling time	From 125 µs to 2 ms for all 24 channels			
Record Length	from 32 ms to 65536 ms			
Filters	Digital Filters: in post-acquisition (50-60 Notch, 250LP) antialiasing: active, LPF, 8° Butterworth order; attenuation -48dB/oct (-160dB/dec); f0=5/8fnyq; accuracy ±1% cutting frequency			
Enhancement (stacking)	With/without total/partial preview			
Delay	0-8000ms (step di 1ms)			
Geophone polarity inversion	Yes			
First Picking	marker to find out the position on the video points on the time scale; possibility to save first arrivals on the file for data transfer to PC			
Seismic Wave Display	wiggle-trace / variable area			
Noise-monitor	Yes, with real time "cascade" display			
Trace-size	Automatic or manual for each channel			
External Data Output	1x USB for connecting an external PC		1xUSB for data download 1xUSB for the connection to a "slave" unit	
Automatic Calibration	Yes			
Data Format	SEG-2, PASI			
Power Supply	12V external battery			
Dimension	27x24.6x17.4 cm		33.9x29.5x15.2 cm	
Weight (ext. Battery not included)	< 3 kg		< 5 kg	





**GEOPHYSICS**

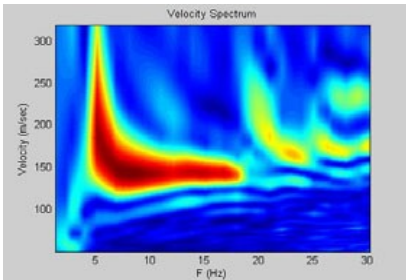
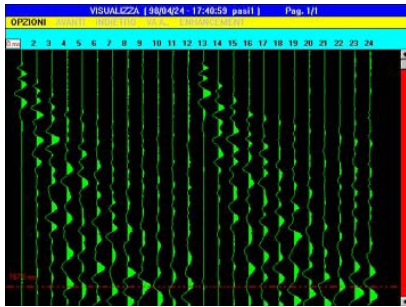
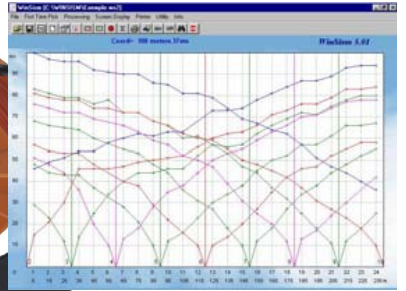


**DISTRIBUTOR**

**EXPLORATION SEISMOGRAPHS  
PASI MOD. 16S-U & 16S-P**



**16S-U with accessories**



**16S-P with accessories**

**Accessories Available:**

- Borehole 3D Geophones
- Seismic Cables
- Orizontal and Vertical Geophones
- Striking plate for "P and/or "S" waves
- Seismic Energizer "ISOTTA"
- Crosshole energizer
- Starter Geophones
- Shielded cable for starter geophone/hammer switch
- Mallet

